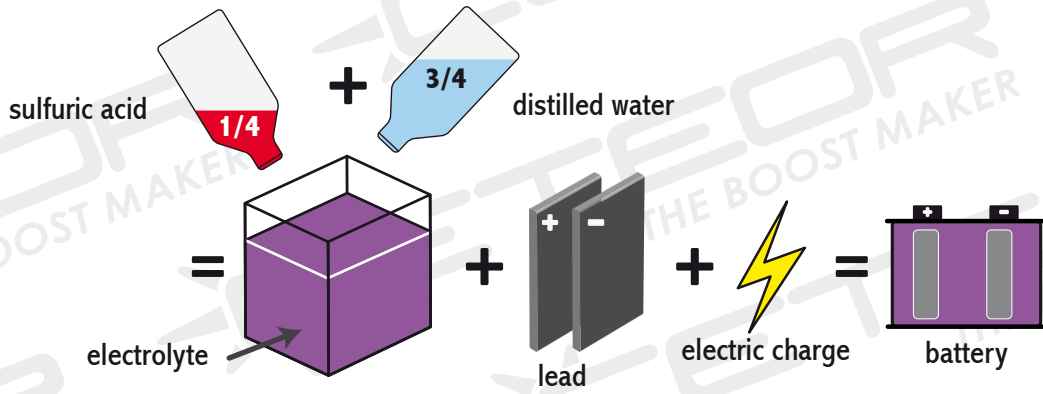
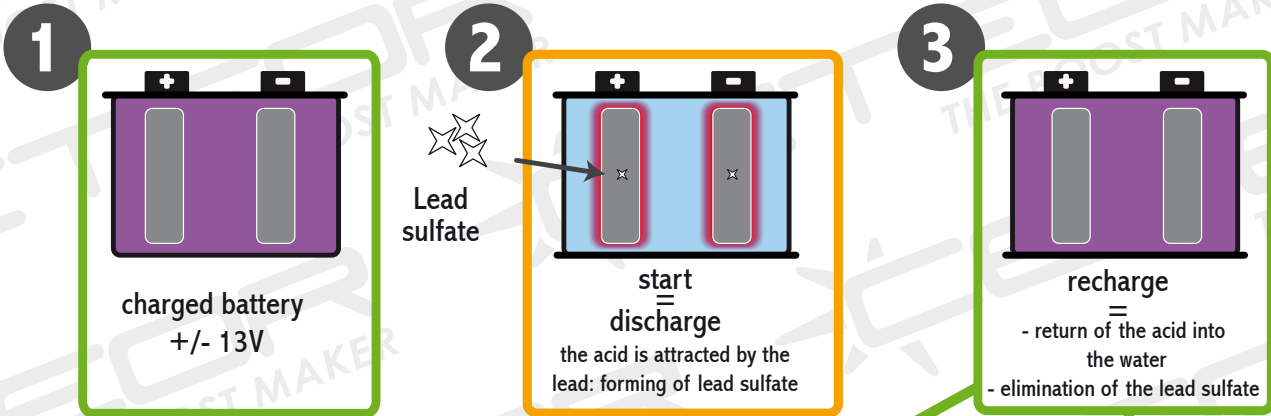


## Composition of a lead-acid battery



JGO - 20100602

## How does a lead-acid battery work ?



**Frost temperature of the electrolyte**  
 charged battery : -40°C  
 discharged battery : -6°C

**Density of the electrolyte**  
 charged battery : 1,28 kg/dm<sup>3</sup>  
 discharged battery : 1,15 kg/dm<sup>3</sup>

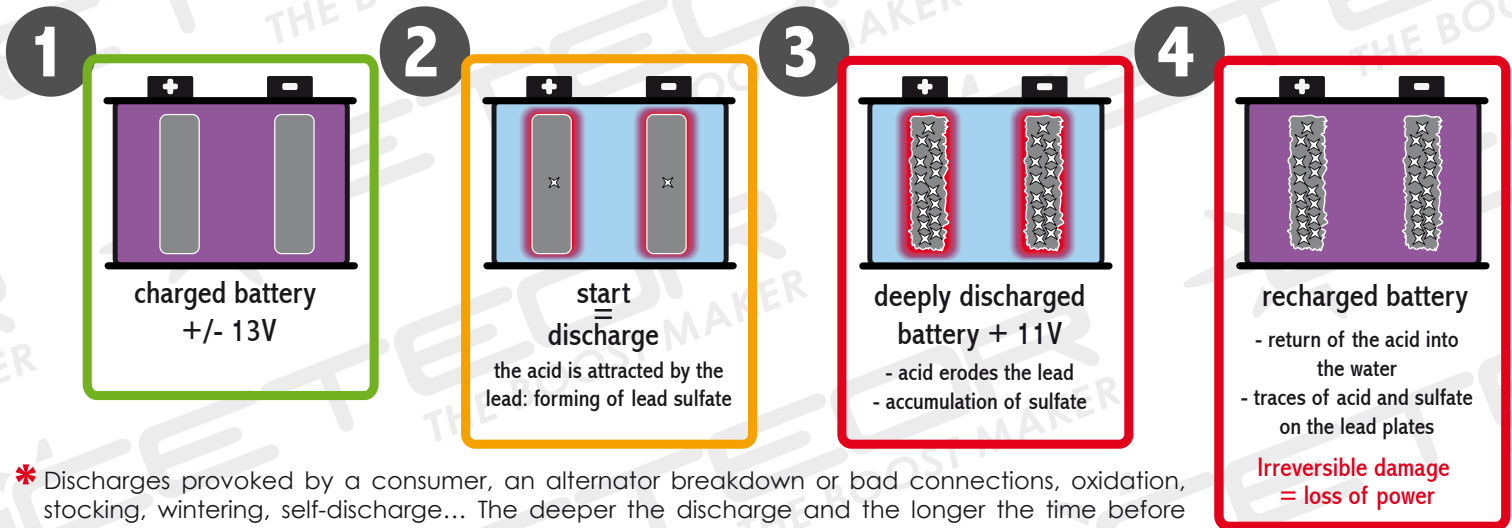
In a vehicle

**Immediate recharge through the alternator**  
 =  
 maximal life span

With a Jump starter PROPULSTATION®

**Immediate recharge PROPULSTATION®**  
 =  
 maximal life span

## Consequences of several successive discharge before recharge or deep discharge:\*



\* Discharges provoked by a consumer, an alternator breakdown or bad connections, oxidation, stocking, wintering, self-discharge... The deeper the discharge and the longer the time before recharge, the more important the irreversible sulfate layer, preventing the current from entering or going out the lead. Premature death of the battery. The irreversible sulfating begins under 12,4V.